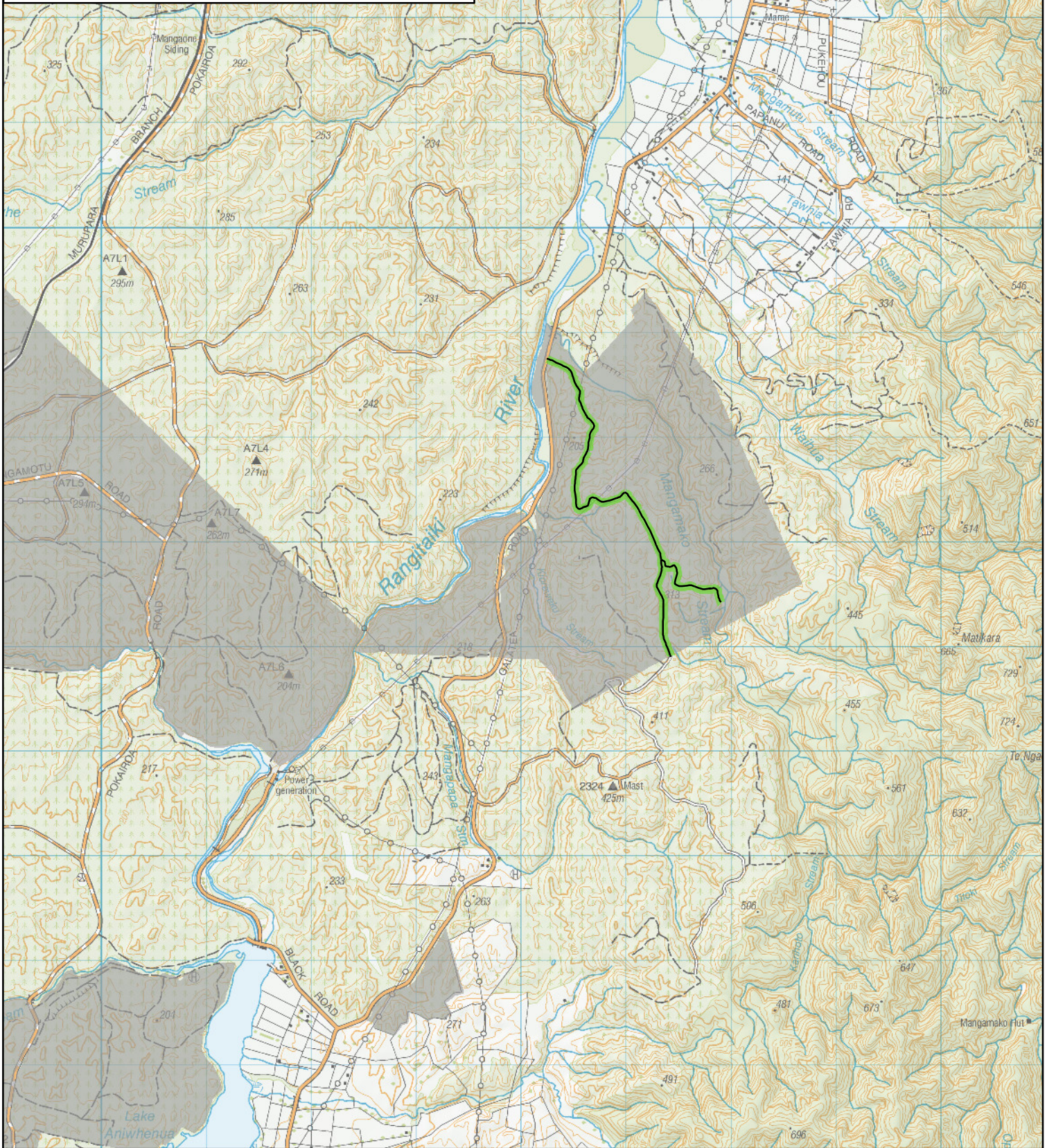


DRIVE TO THE CONDITIONS

Drive at a speed so that you can stop in half the visible distance

TO TE UREWERA NATIONAL PARK VIA: Mangamako Rd



TIMBERLANDS

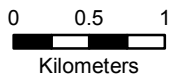
KAINGAROA FOREST

Te Urewera National Park via Mangamako Road Public Access Easements

- Timberlands Estate
- Access Gates
- Public Access Easement Roads

Kaingaroa Forest is managed at Timberlands and Kaingaroa Timberlands discretion.
Note: Gates may be locked at any time for operational and risk reasons

Last updated: 13/02/2017



DAYLIGHT HOURS ONLY. ACCESS ON FOOT, HORSE, BICYCLE, MOTORCYCLE OR LIGHT MOTOR VEHICLE. NO STOPPING, HUNTING OR SHOOTING ON THESE ROADS. NO ACCESS TO OTHER ROADS WITHOUT A VALID PERMIT.