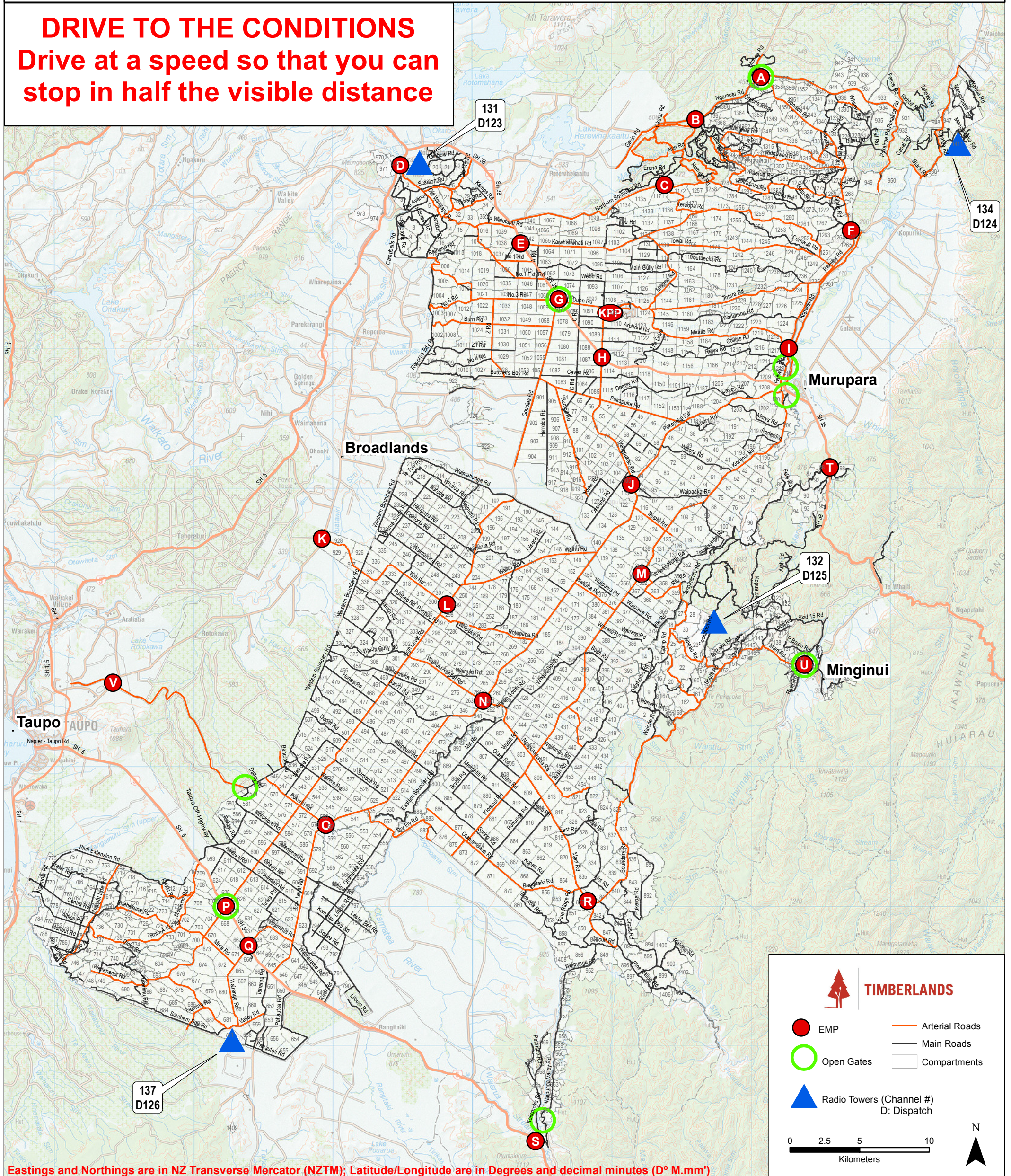


# KAINGAROA ACCESS AND EMERGENCY MEETING POINTS

**DRIVE TO THE CONDITIONS**  
 Drive at a speed so that you can stop in half the visible distance



Eastings and Northings are in NZ Transverse Mercator (NZTM); Latitude/Longitude are in Degrees and decimal minutes (D° M.mm')

EMP	Eastings	Northing	Road Intersection	Latitude	Longitude	EMP	Eastings	Northing	Road Intersection	Latitude	Longitude
A	1920773	5759469	Ngamoutu / Bonish / McKee	38° 15.335' S	176° 39.944' E	L	1898184	5721596	High Level / Tiriti	38° 36.244' S	176° 25.446' E
B	1916075	5756443	Ngamoutu / Unnamed Road	38° 17.067' S	176° 36.810' E	M	1912177	5723801	Kiorenu / Wheo West	38° 34.765' S	176° 35.011' E
C	1913838	5751736	Northern Boundary / Kereopa	38° 19.655' S	176° 35.404' E	N	1900805	5714687	Low Level / Ngapuketuru / Wainuki Arterial	38° 39.920' S	176° 27.428' E
D	1894869	5753137	SH5 / Old Waiotapu	38° 19.285' S	176° 22.371' E	O	1889518	5705789	Low Level / Pukuriri	38° 44.949' S	176° 19.880' E
E	1903508	5747527	SH38 / Kaiwhatiwhati	38° 22.140' S	176° 28.434' E	P	1882335	5699959	SH5 / High Level	38° 48.235' S	176° 15.071' E
F	1927222	5748465	Bonish / Gibbs	38° 21.133' S	176° 44.663' E	Q	1883983	5697119	SH5 / Wairango / Waimihia	38° 49.737' S	176° 16.279' E
G	1906246	5743523	SH38 / Goudies / Dunn	38° 24.245' S	176° 30.416' E	R	1908333	5700313	Main / Boundary	38° 47.522' S	176° 32.994' E
H	1909340	5739353	SH38 / Wairapukao	38° 26.432' S	176° 32.648' E	S	1904559	5683102	SH5 / Pohokura	38° 56.889' S	176° 30.849' E
I	1922749	5740006	Railway / Middle	38° 25.795' S	176° 41.830' E	T	1925696	5731454	SH38 / Te Papa	38° 30.345' S	176° 44.090' E
J	1911434	5730237	Wairapukao / Pekepeke / Low Level	38° 31.308' S	176° 34.328' E	U	1923869	5717295	Main Rd / Old Te Whaiti	38° 38.025' S	176° 43.230' E
K	1889242	5726337	Broadlands / Tiriti	38° 33.862' S	176° 19.177' E	V	1874238	5716006	Broadlands / Taupo Off-Highway	38° 39.725' S	176° 9.104' E
KPP	1909924	5742547	KPP / Webb Yard	38° 24.696' S	176° 32.964' E						