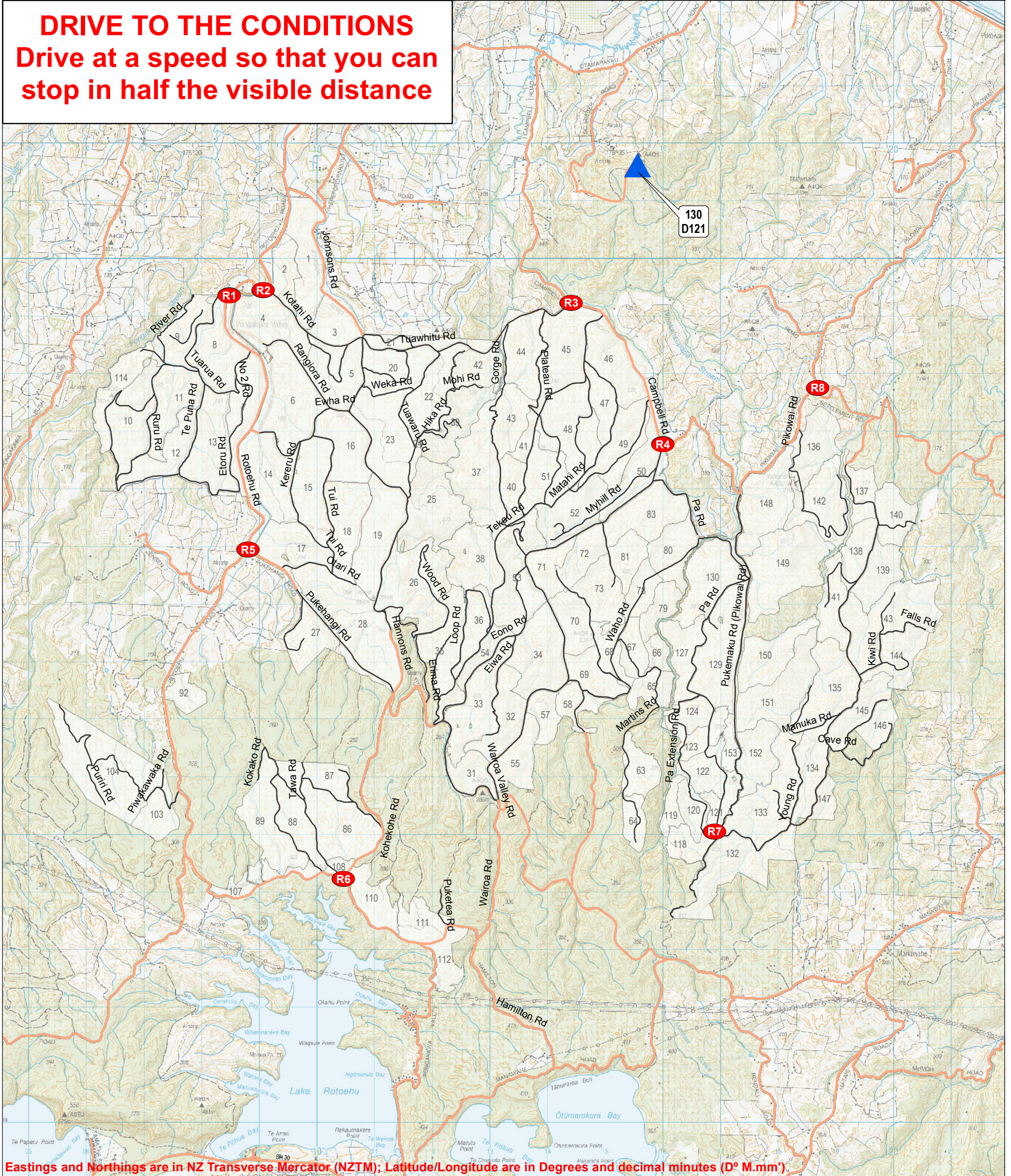


ROTOEHU ACCESS AND EMERGENCY MEETING POINTS

DRIVE TO THE CONDITIONS
Drive at a speed so that you can
stop in half the visible distance



Eastings and Northings are in NZ Transverse Mercator (NZTM); Latitude/Longitude are in Degrees and decimal minutes (D° M.mm')

EMP	Easting	Northing	Road Intersections	Latitude	Longitude
R1	1908476	5799354	Rotoehu / Tuarua	37° 54.065' S	176° 30.495' E
R2	1909064	5799449	Rotoehu / Kotahi	37° 54.002' S	176° 30.893' E
R3	1914412	5799227	Campbell / Tuawhitu	37° 54.012' S	176° 34.542' E
R4	1916002	5796770	Campbell / Wairoa	37° 55.305' S	176° 35.689' E
R5	1908801	5794945	Rotoehu / Pukehangi	37° 56.439' S	176° 30.830' E
R6	1910457	5789229	Pongakawa Valley / Hannons	37° 59.490' S	176° 32.107' E
R7	1916901	5790051	Pukemaku / Pa	37° 58.913' S	176° 36.479' E
R8	1918690	5797755	Pikowai / Settlement	37° 54.717' S	176° 37.495' E

TIMBERLANDS

- EMPs
- Radio Towers (Channel #)
D: Dispatch
- Arterial Roads
- Main Roads
- Compartments
- External Roads

0 0.25 0.5 1 1.5 2 2.5
Kilometers

N